

MACCARONI

Mega Almanacco



Maccaroni 2 "The Mediterranean Gladiators Starsystem" Roma 999 *



Did you know that...?

The Rome subway is more & more bombed 'n the Cotral -the subway system- buff just the glasses. On the lido-line is impossible to find an undestroyed car. The writers cross each other, even a lot of bumpings come out among the crews. The cars of lido-line can be recognize from the '92, when crews like M22, Etc & next Abk started to paint this line.

Rome Subway

ROMA



COOPS SPH lido-line 1998



FIRO CFX from france 1997



FORM SOS a-line 1998



character by BOI 23 rec-POB north-line 1999



THE "mocka" from bolognie north-line 1998



PANDA MOF-VOS b-line 1997



WCA CMO from germany lido-line 1996



THE MG-SOS lido-line 1998



FEZK MOF-PNC-TKS lido-line 1998



MENC PAC a-line 1997



THE MG lido-line 1998

Credevate forse che Maccaroni fosse già arrivato al capolinea? Per tutti quelli che lo speravano, e per quelli che invece lo aspettavano, ecco a voi Maccaroni '2 in versione "MEGA ALMANACCO". In questo numero troverete tutto quello che di meglio abbiamo visto a Roma in questi 2 lunghi anni, in cui per "cazzi svari" non siamo usciti... La scena romana fotografata per intero -fatta eccezione per le solite due crew che non vogliono (???) essere pubblicate da noi-. Vedrete cosa succede a Milano e a Firenze, due delle città più bombate della penisola. Una veduta del panorama svizzero ed in particolare di ciò che è successo in questi ultimi anni a Zurigo. E ancora una valanga di foto dall'Europa, le gesta dei writers italiani in giro per il continente... e l'intervista a Reas (direttamente da New York).

Here we come again after 2 years with this "BIG" issue of Maccaroni '2. In this number you can see:
 -The best of Rome, except two crews. - Milano & Florence reportages.
 - Swiss bogaloo. - Europe trains system.- USA 'n the Reas' interview.
 Sorry for the english, we'll learn it... see ya! ciao!



Credits to: Mizio, Karin the cop, Chero & Dork, Thomas & Thomas, Giose, Bol, Digital Jungle, Reas, Irene & her Dad, Sober, Vno, Cakes & Romeo, Choberia, geom.Alessandro, Gianmarco, Piotta, Zeus, Moreno, Pito, Frick, MG, DC, MOF, OS, 23, SPH, THE, SOS, K2R, FKZ, WAK, CB, PUF, PAC, UFO, VTO, PTE, SOK, TSK, BTS, LOS, CNN, ADD, MOA, VIM, WUFC, FY, SMO, OOS, OSK, TPC, BBS, OSC, VOS, CAS, FTR, S&O, NEROS, EAO, HVS, Micci & Sere & all who support us.



XG vol 2 n°1-france-



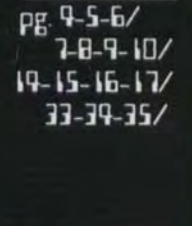
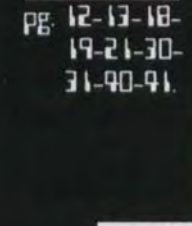
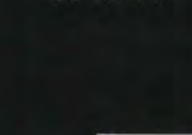
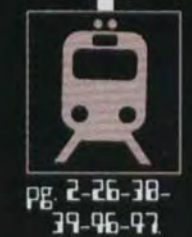
Sicopats n°2-spain-



Teronist -Czech rep-



Star trash -video-60 min. It's coming out the 1st video of Rome !!



To order magazines, our catalogue or to send us photos, our address is:
 Fermo posta Roma Appio
 Via Taranto 11 Rome Italy
 C. d. l. n° AD.1310700



DUMBO VOS-GR-TVA * MACHO GR-VOS * PANDA MOF-VOS from rome 1998



"Macho latino" VOS-GR-LOADS OF VETRA 1998



"Dumbo the animal" VOS-TVA 1998



DENS + RAYN VOS-LOADS OF VETRA 1998



"Spice macho latino" VOS-GR-LOADS OF VETRA 1998



NEURO VMO * REYN GR-VOS 1998



MINDO VOS-SMO 1999

Troppe volte si è parlato della vecchia scuola milanese, così oggi, alle soglie del 2000, ci è sembrato il caso di dare spazio alla scena attuale. Milano è da sempre la città più bombata d'Italia, throw-up e tag - Dumbo e Flood su tutti - sono paste integrante di questa metropoli. I treni FS sono regolarmente dipinti dai VMO crew e pochi altri. La linea nord è completamente riempita da whole car, pannelli e tag della VOS crew & co. Da un anno a questa parte anche la metro è costantemente bombata. Shampo & DUMBO - VOS, ROBIN - RNS GR, MINDO & RISH - CAS, DAZE, NEURO & CONTROL - VMO, BOAT & SHEA - CRZ - hanno dipinto talmente tanto che la linea 2 (verde) gira con pannelli vecchi di mesi.

Too many times we speak about Milano's old school, but at the threshold of 2000, we thought good to talk about the actual scene. Milano has always been the most bombed city of Italy. Throw-ups 'n tags - DUMBO & FLOOD most of all - are part of this city. FS trains are painted by VMO & co. The north-line is completely full of whole car, panels 'n tags of VOS crew and some others. Since last year, even the subway is regularly bombed. Shampo & DUMBO - VOS, ROBIN - RNS GR, MINDO & RISH - CAS, DAZE, NEURO & CONTROL - VMO, BOAT & SHEA - CRZ - painted so much that the line 2 (green) continued to go with panels made months ago.



SENO by 2 CAKE RNS-VOS 1998



ICK by CLEPH VOS-GR 1998



SENO by 2 CAKE VOS-RNS * MINDO VOS-GR-SMO 1998



2 CAKE VOS 1999



"???" by THE + OIL from bologne subway line-2 1998



ROBIN LORDS OF VETRA subway line-2 1998



DUMBO VOS subway line-2 1999



RISK OAS subway line-3 1999



SPICE VOS 1999



KICK by CLEPH VOS 1998



MIND VOS-GR-TAK subway line-3 1998



REIN VOS-GR subway line-3 1998



AYN VOS-GR-TAK 1999



VOS by SHAMPO VOS subway line-3 1998



MACK FX /NYC



DREAM TOK /san francisco



throw-ups /NYC



VASE LW



HAWS TC 5-OF-FC /san francisco



POEM TOK-HS * TENSE HS-TOK /oakland



COPE FC-KO up & down



VENS RIS subway /NYC





MADE IN USA



Hall of fame by the FX generation / NYC



T KID TNB * COPE FC-KO * DUST by SEEN / NYC



DES FX / NYC



QUAKE + character by WERM LORDS / oakland



GIANT AOT-SB-MHC-DTE / oakland



QUAKE LORDS-UM / san francisco



GIANT AOT / san francisco



Hall of fame by NOSM RAL-TATS * COPE FC-KO / NYC



TIKE AWR / OAKLAND



SUCK * BIG / NYC



'ICH TM 7 / OHIO



DES FX / NYC



NIGER / ???



Hall of fame by PER + DES + ??? FX crew / NYC



"AKSONE DESTROY NYC"



GIANT BA-MH-A team /francisco



JESSO COO /NYC



ELON THW /san francisco



throw-ups by JA XTC /NYC



throw-ups by JA XTC /NYC



DREAM TOK /oakland



TWIST THR * VENDOR IW-TFL /san francisco



GIANT BA-MH-AOT /san francisco



COLOURS 1st part



SOPHIE 905 VIMORA-MSN 1998



CHACE DOT 1998



PATIENT WTC subway 1997



KRASH BTS 1998



GOTHIC LSO 1998



NOON VOC-RF * SHUTE VOC 1998



SHER ADD * THEK ADD-THE-DAM 1998



BLE WC 1998



JOSH OIO subway 1997



"The TSK" by BLUE TSK + TROJAN TSK 1998



MARS TPG 1997



► Here it's the 1st look to the FS (the Italian railway system) writers production.



ENS FTR-PIARS /florence 1998



BLEF POB /genova 1997



CHOB AB /faenza 1997



THE DC-MG /rome 1999



CHOB AB /faenza 1997



LAUREN by SMART FTR-MIB-S&D /florence 1998



PUER SOS-MG /rome 1998



DALE THE /rome 1997



ASH one from some where /seen in rome 1998



GUESI + WCR by HONET from france /florence 1998



character by BOL 23 rec /rome 1998



THE DC-MG from rome * MG by RIFE MG /ascoli 1998



VELA THE-MG /rome 1997



THE MG /rome 1998



KEIN NEROS /florence 1998



THE MG /rome 1998



CHOB THE /bologna 1998



GOE AB /bologna 1997



married couple by MOF by PANDA MOF-VOS * THE DC-MG * DIA DC + KIMO DC from swiss /rome 1998

SWISS



In Svizzera i primi pezzi si iniziarono a vedere nell'82

I primi writers furono gente con Lords.

Gen, Bost, Ashes, Crew come i "Wild Writers" o le RWA (esclusivamente donne), ZAT, ROC MEN, UTK, ATK, UC BOYS erano attive in quel periodo. Finendo ai gruppi più recenti come i MA (RABS R.I.P.), TS (REST), LEX JAY (HOLY-DIEM), OO, FASH, VTO, & ZH, una crew che racchiudeva tutte quelle più attive all'epoca.

Altrettanto attivi erano i "GOW di Basel (JACK, VOLT,

ROSE e altri come AEMO) molto conosciuti anche all'estero, che oggi dipingono solo sporadicamente.

La crew svizzera più conosciuta resta sempre la TWS che può contare tra le sue fila gente come "DARE TOAST", ROSE, DREAM & co.

Le crew più attive a bombare treni in quantità sono quasi tutte di Zurigo: UFO, VTO, OO, TS, GTS, YTO, AT.



CREW VTO 1997



CHUBS VTO-MA 1998



DREAM 1997



CHUBS one VTO 1997



TEARX RTS 1997



CREW VTO 1997



KIMO OO-THC 1997



MAX MORIS AT 1997



CHUBS VTO-MA 1998



DIA OO 1998



RESK VTO-ROT 1998



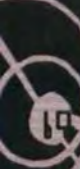
ROCKY VTO 1998



INAK UC BOYS * RESK VTO-ROT 1998



CREW VTO * CARS VTO * ZIM VTO-UC BOYS * KIMO OO-THC 1997





ZIM UC BOYS-VTO * RESK VTO-ROT * CHUBS VTO-MA-OSA 1997



DIA DC3 car of whole train (let's see the 1" in 2" per on XG# 1vol2) 1998



"The next level" by SEXE VTO 1997



ZIM UC BOYS-VTO * RESK VTO-ROT 1997



"Criminal ufo toys" by SEAH UFO 1998



"Happy new year" by RESK VTO-ROT 1999



RESK VTO-ROT 1998



KIMO DC 1998



CREW VTO * ZIM UC BOYS-VTO 1997



SEOSH UFO 1997



CREW VTO 1997



VTO'S by SEXE VTO 1997



EGA VIMOA-MSN from Denmark 1998



DIA DC-ADD 1998



THE DC-MG from Italy 1998

The first Swiss pieces came out around the '82. The first writers were Lords, Gen, Bost, Ashes. The first crews were the "Wild Writers", the RWA (only flygirls); ZAT, ROO MEN, UTK, ATK, UC BOYS.

The new crews are: MA (RABS R.I.P.), TS (REST), LEX JAY (HOLY-DIEM), TOO, FASH, VTO, & ZH that complain the most active crews of that period.

Also the GOW from Base 1 (JACK, VOLT, ROSE & REMO) who were very popular in the foreign countries... but now they paint rarely.

The most famous Swiss crew is always the TWS (DARE, TOAST, ROSE, DREAM & co).

Strictly all the most active crews to destroy trains come from Zurich: UFO, VTO, DC, TS, GTS, YTO, AT.





besides florence, milano, rome & bologne, even the others cities like venzia, ancona, ascoli, bari, genova, napoli, treviso, salerno, padova... etc have an active trains writers scene.



CHOB THE-88'S /bologne 1998



THE CREW MG-DC /rome 1999



COONS THE-FCA-MIB from germany /bologne 1998



BUOA from spain /rome 1999



FOE PME from france /rome 1998



CORE IOI /rome 1998



THE MG /rome 1998



ZELDA MG /pesaro 1998



YRON 23 rec /rome 1998



NESH TPC from austria /rome 1998



HEMAN DS /rome 1998



Mr. MAKS AT from swiss /seen in rome 1998



MIGS from swiss /seen in Rome 1998



MILLAN MOF-VOS-FY /rome 1998



THE CREW SOS-MG /rome 1998



SPICE VOS-BA /milan 1998



IA DC-ADD + 3 times KIMO DC-ADD from swiss /ancona 1998



"L'eroina t'arrevina" (the heroin destroy you) by THE-MG crew Ascoli 1998



WESY + DARE TWS from swiss/holland 1998



"Asshole cychole" CYCLE /usa 1997



PETRO /holland 1998



ROMEO OSK /czech republic 1998



DOMIT FBI-FX /germany 1996



THEK ADD-THE-DAM /denmark 1998



VIRUS "gold plus" AA /canada 1996



POIS ABX-NUT * WHY /czech republic 1998



DOMIT FX-FBI from germany /usa 1998



There're a lot of private train system in italy. These trains run around the big or small cities of italy. They represent the playground for a lot of writers. Check it out!



CAKES OSK from czech republic /milano 1998



DALE THE from rome /napoli 1997



BOSS OC from rome /salento 1997



CHOB THE /bologna 1998



LEGO TBL from rimini s* TEXAS NEROS bologna 1998



WATO from vicenza /milano 97



FOE PME from france /napoli 1998



DENS VOS-TAK /milano 1999



ZELDA MG /pesaro 1997

IN the yArD with... The crew

if you want to have a special about you in your yard, send us crazies photos - check the address on pg. 9 - This is The crew one of the most active crew in Rome...

Throw your ass in THE air in every season



DOUBLE THE say "hallo!" autumn 1998



a THEerrorist in June 1998 (or 1999?)



THE invisible man fuckin' his girl... summer 1998



THE Fatty Fantaman winter 1999



- team in THE yard winter 1999



Happy days with THE crew spring 1998



THE zorro behind his piece summer 1998



alone with THE summer 1998



THE winner in winter 1997



THE new A-line Rome subway - let paint it but... you'll be THE 2nd !!!

Mr. Reas all over the new York City



Maccaroni: Why did you choose your name?
 Reas: There was this guy at my school who wrote "Reas" so I thought to write "Reas". However my first name was "Blight 2".
 M: When did you start to tag Reas?
 R: At the end of '82, when I painted, I used to write more Reas than Blight 2, so Reas became my first name.
 M: Who influenced your style?
 R: Strictly I have been influenced by all the most actives writers of that period.
 M: Who was with you, the first time, that you have been in a yard?
 R: there were Cist, Sek & Arc.
 M: How did the writers change attitude since '82?
 R: The first writers were 12-17 years old, but now they are 18-24 years old.

At the begining the guys painted just for themselves, but now it's becoming a business (videos, fanzines, caps...)
 M: Is it important to paint a buffed train today?
 R: No I don't think so, it's just a personal point of view, I had liked destroyed trains.
 M: Who were the most active?
 R: Iz the wiz, Min, Skeme, Ouster, Renard, Hazy haz & Rook.
 M: Who were your crews?
 R: I came down with (Cist, Sek, Hep, Brisk, Fear, Aber, Arc & Dominate) the Sns crew.
 M: Are they still painting?
 R: The most part of them gave-up.
 M: ... and the others crews?
 R: Aok '85 '86 with Mesh, Wolf, Fuel, Pure, Ven & Weber.
 In the '87 I stopped. In the '88 Ven painted with Ghost and just him convinced me to start again. I met Ghost and I painted with them and the others guys like Magoo 2, Th, Smog, Ja, Smith, Sane, Remote, Cat. Later Ghost let me enter in the R.i.s. crew.
 M: Do you feel now the same vibes of that year?

R: I still like to see my pieces running, but I'm worried when I paint in a yard. While the others writers are in the interrail, I go shopping by Gucci...
 M: What do you feel about the walls?
 R: I like them, but when I started to paint I made only tags on them. In the "Spraycan art" book there is my piece on a wall on page n° 30 that made me become like a "rock star".
 M: Do you think that your crews are important?
 R: When you arrive at certain time, you are everything and you don't care about crews.
 M: How many spray have you stolen in one time?
 R: I filled up a trolley and I went out from the shop... but I'm not a good stealer.
 M: Which is your favorite yard?
 R: I prefer Franklyn Avenue Shuttle at Brooklyn. You could stay over there for 3 hours, there were only 3 cars totally unattended. The rest of the yards were entirely attended. The yards were divided by the crews.



"Eat shit" by Reas-Ghost & Magoo N.Y. subway



AOK VEN



REAS N.Y. subway



REAS AOK-RIS * VEN AOK N.Y. subway 1998

M: When did you come, the first time to Europe?
 R: In '87 I went to Paris and to London where I met Drax.
 In the '92 I painted the A'dam subway with Pure & Rhyme, W.C. & panels with Ven.
 M: Which differences there were between A'dam & New York?
 R: A'dam wasn't destroyed like N.Y.C. There were a lot of pieces on the subway, but inside the cars were clean. I didn't relive New York in Europe still now.
 I still discover that in New York there were a lot of people who destroyed, but I didn't know it.
 M: What do you think about Rome?
 R: I love it! I love trains and I like pieces.

There are a lot of girls too. If you want to become famous you have to live here at least 6 months.
 M: What do you think about the other Italian cities?
 R: I have seen Florence, but I think that I would like the others, because also Sharp had painted here. Here the trains run, while in N.Y. the pieces don't survive more than one year.
 M: Who do you think has painted more in N.Y.?
 R: Blade, Min, Iz the Wiz.
 M: What kind of spraycans do you prefer?
 R: Strictly the new Rust-oleum - painter touch - are the best.
 M: How many subway have you painted?
 R: About 200.
 M: What's your "masterpiece"?
 R: It's the W.C. "eat shit"! I made it with Ghost & Magoo. There was Ven

too. He complained of his t2b would have been buffed because we were writing "eat shit" near his car. The important fact was that we didn't tag the W.C. but the people understood that I painted it. At that time everybody wrote just their name.
 M: Who is your favorite new-writer?
 R: He's the spanish Pie cause I think he makes something new!

Big up to: Dork, Sacha, Trota & The Daze, Espo, Henry, Guim & doctor Ens, Kein, Sharp 'n Chobe.

PRAS!



RHYME GVB-CBS + HIGH CBS from holland * DRAX GVB-ADK * REAS ADK-RIS /London 1998



REAS /Los angeles



REAS ADK-RIS-COO



DRAX GVB-ADK from england * REAS ADK-RIS * GASP * DELTA INC /a'dam 1998



SMART ADK-FTR-S&D * REAS ADK-RIS / florence 1998



ESPO ADK * GHOST RIS * REAS ADK-RIS 1998



REAS COO-RIS-ADK 1998



REAS ADK-RIS * DORK FTR-S&D-ADK * DAZE from N.Y. /florence 1998



THE MG * REAS ADK-RIS * SMART ADK-FTR-S&D from florence * I love... THE MG-OC subway lido-line Rome 1998



ROME Subway



part of whole train by THE MG north-line 1998



KONGO SPH b-line 1999



THE from bologne north-line 1998



THE MG a-line 1998



"THE crew" FCA from germany b-line 1999



ANEK MOF-OS a-line 1998



PANDA MOF-VOS a-line 1998



MENC PAC lido-line 1997



THE MG-DC-SOS a-line 1998



JINA MAK * ANEK MOF-OS lido-line 1998



VINO VOS from italy/sweden 1998

ALONE in THE DARK



RIOT subway /france 1998



THE MG-DC from italy subway /belgium 1998



CHOB RB from italy /belgium 1997



SHAS ON from spain /belgium 1998



VIMDAS by KEGR VIM-MOA-MSN /denmark 1998



FOERE "marker performance" PTME from france subway /greece 1997



OPAK SOK from france /belgium 1999



FCA by coons FCA-THE-MIB from germany /england 1998



ENFER subway /france 1998



VINO /spain 1997



MIND VOS from italy /sweden 1998



LOST PME-SOK from france /spain 1998



BRVO 86K from france * HULK GAP from belgium /poland 1998



THE FCA-MIB from germany * THE DC-MG from italy /denmark 1998



BLUE TSK * VINO TSK-PME /spain 1998



BASE SOT-ADD-TO * COONS THE-FA-MIB from germany * LOSER THE-DC-MG from italy /sweden 1998



THE MG-DC from italy * ROMEO OSK * CAKES OSK /czech republic 1998



'Why adds' ADD-WHY-KBS-DAM /denmark 1998



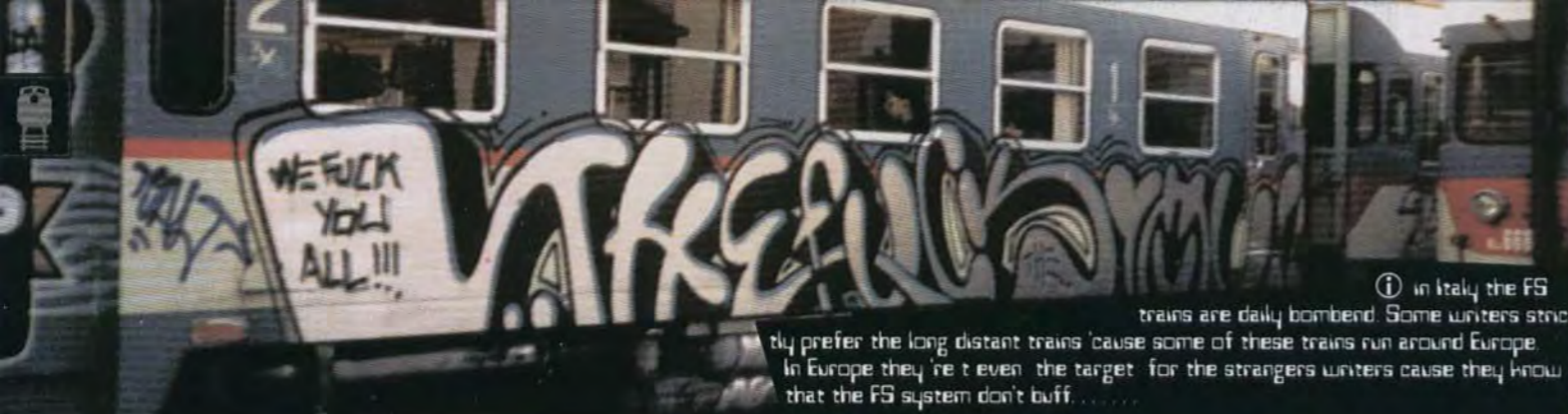
BOZO TARZAN ALL CITY DOS subway /england 1997



LES one MOA-MSN-VIM * MINS MOA-MSN-M * SAGE /denmark 1998



hole cars by ALL + HETS ALL + NEKS THT from norway /denmark 1998



① in Italy the FS trains are daily bombed. Some writers strictly prefer the long distant trains 'cause some of these trains run around Europe. In Europe they're not even the target for the strangers writers cause they know that the FS system don't buff.



PUER SOS /rome 1998



SMART FTR-S&D /florence 1998



LIZE * YACON 23 rec /rome 1998



THE BB'S /bologna 1998



TRUE GF-B /rome 1998



READ by KEF 101 /rome 1998



THE MG-DC from rome * AIFE MG /ascoli 1998



THE MG /rome 1998



character by BOL 23 rec /rome 1998



HEAT SR from germany /rome 1998



MODE MOF /rome 1998



PANDA MOF-VOS /rome 1998



TEXAS NERDS /bologna 1998



WES by UENI PUF-POB-TSK from brindisi /rome 1999



THE MG * HULK HV-MG from bari /rome 1998



PANDA MOF-VOS /rome 1998



SNOY PAC /rome 1998



'The hill The' MG /rome 1998



HEMAN OS /rome 1998



PERFECT PIERS-AS /florence 1998



BEIS MOF-PNC-TKS /rome 1998



FDE POME from france subway 1997



CHWBS VTO 1998



OPIUM FCA-RTO 1998



SHOK CNN 1998



SUCHE 1998



RAISE 1998



RESK VTO-ROT



RAGE SKL 1998



HULK PAG 1999



ERBER POME SOJA 1998



OMEG OSK 1998

Anticamente c'era ZERO T, ma quello che sinceramente mi ricordo sono i trow up "JUST" di JUSTOOOL oggi conosciuto come JAYCEE.

Passava l'87/88, ZERO T, all'epoca aveva un paio di pezzi sulla linea verso Roma. Verso il 90 apparvero i pezzi alla stazione di Rivedi eseguiti da STORM ed altri. Nel 90/91 DARK iniziava a dipingere in solitaria i primi treni e i suoi primi muri con CHERO ed ogni tanto appariva qualche ENIST. Verso il 94/95 venne affiancato da altri writers dediti a dipingere treni, tra i quali ancora ENIST. Nel 96, col boom, sono apparsi nuovi writers tra i quali i personaggi di spicco sono: GUIM, BIS, KEIN, KEF, MAG, SQUEEZE colla SPH crew. Dal 96 ad oggi la gente, che tuttora dipinge treni costantemente e' rimasta la solita: DARK, ENIST, KEIN, SQUEEZE, MAG -oggi conosciuti principalmente come S&O/NEROS crew- e la HO crew. Writers tipo CHERO oggidipingono soprattutto muri, ogni tanto si rivede ZERO T. Gli altri hanno smesso.



DARK



ENS FTR-S&O 1999



GUIM PIARS 1997



PERFECT PIARS-AS 1998



BIS PIARS-LOROS * LOGAN NEROS 1997



BENNY FTR-S&O-MIB 1998



NEROS AS 1998



DARK PIARS-FTR-MIB 1997



GULO PIARS-AS 1998



SMART FTR-PIARS-S&D * FAT CAP + FIRST SOH-12S + GUES from france * GUIM * NEROS 1998



SMART FTR-M18-PIARS 1998



PERFECT PIARS-AS 1998



ENS PIARS-FTR-M18 1997



LOST PIARS 1997



CHERO PIARS-LORDS 1998



PIALA KO 1998



BIS PIARS-LORDS 1998



CHERO PIARS-LORDS 1998



SMART FTR-M18-PIARS 1997



ENS PIARS-FTR-M18 1998



MARLON NEROS 1997



NEROS AS * SMART FTR-S&D-ADK 1998



ENS PIARS-FTR-M18 1997

Originally there was ZERO T, but as far as I can remember, JUST COOL - now know as JAY CEE - wrote some kind of throw-ups "JUST". During '86-'87 ZERO T had some pieces made on the line to Rome.

Around the '90, pieces appeared at the station of Rifredi made by STORM and others. Between the years '90-'91, DARK started to paint alone his first trains 'n together with CHERO he painted his first walls (sometimes even some kind of ENIST appeared).

Around '94 other writers started to paint with him and among these was ENIST. In the year 1996, with the boom, a lot of writers started to come-up hard, like for example: GUIM, BIS, KEIN, KEF, MAG, SQUEEZE & SPH crew.

Since '96 till today, the writers who constantly painting trains remain the same: DARK, ENIST, KEIN, SQUEEZE 'n MAG - the NEROS-S&D crews- and KO crew.

Kind of writer like CHERO paint just walls, sometimes you may see pieces of ZERO T. The others gave up.

DARK.





0000 LOS /england 1998



BLE WC /poland 1998



HICK from germany /poland 1997



NIOIO FCA-THE /germany 1997



BLYDE from france /england



AODS by THEK + MIST /denmark 1998



KATO /germany 1998



FOE PME from france /spain 1997



ANNE LOS /england 1998



GAP by HULK GAP /france 1998



AM by WOE WJFC subway /sweden 1999



REBUS PNC-MDF-TKS from italy /germany 1998



BITCHES by DC-ADD /denmark 1998



FCAOS crew /germany 1998



SHOK CNN from belgium /france 1998



HETS ALL + JUAN ALL from norway /denmark 1998



PANDA MDF from italy * JAKE SIMO from holland/sweden 998



CAKES OSK /czech republic 1997



SIAUS TPG /england 1997



THE -last car of the same whole train of DIA- DC /swiss 1998



KAT FCA /germany 1998



BLE WC /poland 1998



BLOCK CDC * DIAL TAG from finland /some where in europe 1997

① the north-line run from the centre of Rome to the neighbourhoods of the capital city. Zkm.pac.etc.ztk was the 1st crews to paint these trains. After it was the turn of 23.ds.mdf, now the rnb crew is the most active to paint it.



HEGA VIM-MOA-MBN from denmark a-line 1998



COPS + HENGO SPH b-line 1998



ROBIN RNS-GR from milan b-line 1997



AETA TPC from austria b-line 1998



PAZE VMO from france lido-line 1998



IRON 23 rec north-line 1998



IRON 23 rec north-line 1998



MATH NES from holland lido-line 1997



CORE 101 north-line 1998



CHEM 23 rec lido-line 1998



MEN PAC b-line 1997



OTHE from bologne lido-line 1998



THE MG lido-line 1998



BEIS MOF-PNC-TKS lido-line 1998



character by BOL 23 rec north-line 1998



HIMAN OS north-line 1998



THE from bologne b-line 1998



HEAT SR from germany b-line 1997



HIMAN OS north-line 1998



CAKES OSK from czech republic b-line 1998



THE MG b-line 1998



THEK ADD-DAM-THE from denmark north-line 1998



THE S MG lido-line 1998

① Did you know that... Since the end of the '92, when etc.mt2 & game start to paint it, the A-line was a different thing than the other line like the b & the lido line. At the end of '96 the pac crew start to paint very hard the line for the 1st time 'n in that period they made the first whole train. Even the zkm-sip was very active at that time. Since the end of '97, only the crew 'n after a few time, sos crew bombed regularly the line. The last year the crew destroyed the A-line with 2 one man whole train - the 1st of the history of Rome!!! - some w.c 'n t2b & a lot of panels. It's becoming to run the new kind of train and the the,ds,sph crews have already painted it.

ⓘ Strictly now, in Rome, the s-trains FM-line (the orange trains) are the most bombed by the local scene. Pac was the only one crew who painted this kind of FS trains since '96. But in the last months, the puff, ztk & sos start to paint the orange trains regularly in the fm-line it's on fire...



ATOMÉ TFP-IBS from australia * MILH TFP from germany /rome 1998



MARC from some where /rome 1998



new TAF train bombed by TOOLS FKZ /rome 1998



THE FISH THE-OSC-BB'S /bologna 1998



GREY PVC from usa /florence 1998



ASME PAC /rome 1998



BAZE MOF-PNC-TMS /rome 1998



THE BB'S from bologna /florence 1998



THE MG /rome 1998



THE BB'S /bologna 1998



THE MG /rome 1998



Mr. BEAM OC from swiss /rome 1998



BOHE SOS * SERKE TOA /rome 1998



WIES PUF /rome 1998



IOYS EAO /padova 1998



THE MG /rome 1999



STAR ADD from sweden /rome 1998



SYLA PAC /rome 1998



ITEN PAC /rome 1998



'the first year of The' by THE- MG-OC /rome 1998



KICK by CLEPH VOS + SPICE VOS-GA from milan /rome 1998

the ITALIANS iNtErAIlErs

- The MacCaRoNi tAsh FoRcE



① this is what our goodfellas made in interail, they're the craziest "maccaroni" around the world.



HELIS FTC-NES from sweden * ENS F PIARS * DARK FTR-PIARS * RASE SOT from sweden /sweden 1997



THE "AODS" MG-OC /denmark 1998



THE MG-OC /england 1998



THE MG-OC /england 1998



THE MG-OC-FCA-88'S subway /sweden 1998



CHOB AB /france 1997



PANDA MOF-VOS /sweden 1998



HEMAN OS subway /england 1998



DUMBO VOS-TVA /france 1998



RAPE PUF /australia 1998



FIST LORDS OF VETRA-VOS subway /germany 1998



FIST VOS /germany 1998



VOS VOS-GR-TAK-MOF subway /germany 1998



DUMBO VOS * PANDA MOF-VOS-LORD OF VETRA subway /germany 1998



"Dio c'è" by LONGE AB /france 1997



VIND TSB-PME from spain * SHA VOS /spain 1999



"the euro tour" by THE-MG-OC /poland 1998



BOSS /germany 1997



THE EUROPEAN BELVEDERE 3rd



PUM SOK-PME from france /spain 1998



BLUE TSK /spain 1998



HIGH * ANNA /poland 1998



RITS GAP from france /poland 1998



VIMODAS by SOPH 905 VIM-MOA-MSN /denmark 1998



USAUC USA-AUC /denmark 1998



THEK ADD-DAM-THE * SOPH VIMODAS-MSN /denmark '98



KEGR MOA-VIM-MSN / denmark 1998



RAGE /GERMANY 1998



VINO TSK-PME /spain 1998



GOODNS FGA-THE /germany 1998



CES TNB from "bronx"NY /germany 1997



BLUE TSK /spain 1998



IFF LOS /england 1998



ENFER SOK-PME (new TER train) /france 1998



"THE RUB" DC-MG from italy /belgium 1998



INXS 125-SOK from france /poland 1998



FIZZ from the underground /spain 1998



ERIE WTD



MOON SOK-SMO-CMO (subway) /holland 1997





character by THE SOS-MG a-line 1998



Dina * THE FOE by THE MG-DC + FOE. PME from france * ANEK MOF-DS lido-line 1998



THE MG-DC * LEADY ADD-WUFC + ALIEN ADD from sweden * PANDA MOF-VDS lido-line 1998



THE MG-DC * LEADY ADD-WUFC from sweden north-line 1998



THE "forza roma" MG-DC b-line 1998



THE MG-DC * FOE PME from france * PANDA MOF-VDS lido-line 1998



??? + BILL PLC-CP + HANS KO O from finland 1997



DIA DC-ADD + WIMO DC- ADD from swiss b-line 1998



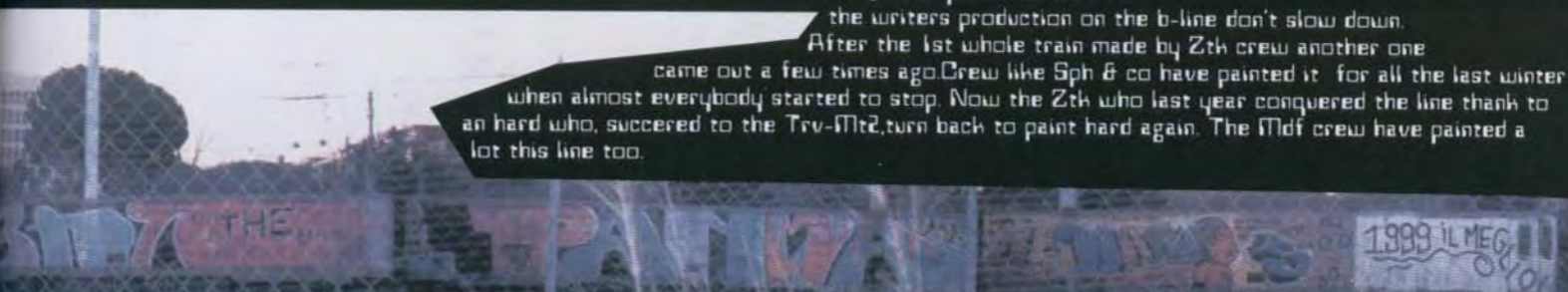
TENC PAC * SMAERT PIARS-FTR from florence lido-line 1997



PUM PME-IT + GUES + HONET SOH-IT from france lido-line 1998



whole train on b-line by HOVE + NICE BTS + ESIK HVS + AIMA TSK + VINO TSK-PME from spain * THE MG-



PANDA VDS-MOF * HEMAN DS "il meglio del 1999" 1999

① Did you know that...
 the writers production on the b-line don't slow down.
 After the 1st whole train made by Ztk crew another one
 came out a few times ago.Crew like Sph & co have painted it for all the last winter
 when almost everybody started to stop. Now the Ztk who last year conquered the line thank to
 a hard who, succered to the Trv-Mt2,turn back to paint hard again. The Mdf crew have painted a
 lot this line too.

Back Jump

自内土长舟之毛 舟之ナ土口口



Do you want to paint a new & unpaintable subway like those in Paris? Follow carefully these instructions how The, Shas, Shamic & the Arrache Totale98 did.



1st Catch the train until the station desired.



2nd Arrived in the station, wait till the doors open.



3rd Pull the emergency knob found near doors so that you can leave the doors open.



4th Start to paint on the other side of the train where you have get-off.



5th Paint without minding the people buggs.



6th Don't be distracted by curious people.



7th Take a photo in front of your piece as souvenir.



8th Stop taking all the photos you need.



9th Now you can calmly go to exit.

p.s. you'll leave a poor cop that doesn't know anything about what you did on the train.



With a little bit of luck 'n if you carefully follow these instructions, it'll be sure that you'll have your target. That's all the folk. ciao!

